

# ENERGY 2016: RISK, RESILIENCE AND CYBER SECURITY OF GLOBAL SUPPLIES

Institution of  
**MECHANICAL  
ENGINEERS**

21 June 2016  
Part of International Festival for Business 2016  
Exhibition Centre, Liverpool, L3 4FP

**Conference, Knowledge Transfer**

More details available at  
**[www.imeche.org/energy2016](http://www.imeche.org/energy2016)**

## **KEY SPEAKERS INCLUDE:**

Samuele Furfari, Advisor to the Director General for Energy, **European Commission**

Tom Baer, Deputy Director, National Cyber Security and Communications Integration (NCCIC), **US Department of Homeland Security**

Suleman Alli, Director of Strategy and Regulation, **UK Power Network**

Julian Leslie, Electricity Network Development Manager, **National Grid**

**BOOK EARLY  
AND SAVE  
UP TO £200**

**OFFER ENDS**  
29 APRIL 2016  
**TERMS AND CONDITIONS APPLY**



# WHY ATTEND ENERGY 2016: RISK, RESILIENCE AND SECURITY OF GLOBAL SUPPLIES

21 June 2016,  
Exhibition Centre, Liverpool



**DELEGATES WILL COME AWAY FROM THIS ONE-DAY CONFERENCE WITH A FULL UNDERSTANDING OF THE INTERNATIONAL PERSPECTIVES ON THE GLOBAL CHALLENGES BEING FACED WITHIN CYBER SECURITY, SECURITY AND RESILIENCE, AND HOW GLOBAL ENERGY STAKEHOLDERS CAN PREPARE FOR THE FUTURE.**

This one-day event, taking place as a part of the International Festival for Business 2016, will feature thought-provoking presentations and discussions addressing the long term strategy for international energy security and resilience.

Energy markets globally are going through a significant period of change and are consistently impacted by many external factors – including government intervention and cyber threats.

**Energy 2016: Risk, Resilience and Cyber Security of Global Supplies** will bring together key industry figures to discuss the global challenges being faced with security and resilience, and how global energy stakeholders can prepare for the future.

## KEY TOPICS INCLUDE:

- The security of supply across the wider energy supply chain
- How the energy mix is changing now and how to manage now and in the future
- Preparing for possible energy gaps
- The timescales, technologies and trends for nuclear power plant deployment
- The need for investment and what happens after government incentives end
- The threat to infrastructure and how the industry is enhancing cyber resilience

## ATTEND ENERGY 2016 TO:

- Hear from the **European Commission's** Advisor to the Director General for Energy on the security of supply at the core of the Energy Union
- Learn how the energy mix is changing, where it is evolving and how it can be managed now and in the future
- Take-away **international perspectives** on security and resilience within the wider energy industry
- Discuss the possible energy gaps with existing and new **infrastructures** and the timescales, technologies and trends for nuclear power plant deployment
- Review the need for **investment**, how government incentives are supporting and what happens next
- Understand the threats to infrastructure and how the industry is enhancing **cyber resilience**
- **Network** with senior industry professionals and discuss the key findings from the conference

## WHO SHOULD ATTEND?

Energy industry professionals from across the globe, from director to developing engineer. Specifically, Heads, Directors, Managers and Engineers involved in the following are highly recommended to attend Energy 2016:

- Planning
- Project engineering
- Structural analysis
- Power station operation
- Investment delivery engineering
- Strategy and regulation
- Electricity network development

BOOK BY **FRIDAY 29 APRIL 2016** AND **SAVE £200**  
[www.imeche.org/energy2016](http://www.imeche.org/energy2016)

# PROGRAMME

TUESDAY 21 JUNE 2016	
08:30	REGISTRATION AND REFRESHMENTS
09:00	CHAIR'S OPENING REMARKS
	PACKAGING AND DESIGN
09:10	KEYNOTE ADDRESS FROM UK POWER NETWORKS Suleman Alli, Director of Strategy and Regulation, UK Power Networks
09:40	SYSTEM OPERATION EXPERIENCES AND INNOVATION Julian Leslie, Head of Electricity Network Development, National Grid
10:10 PANEL DISCUSSION	THE IMPACT OF A POTENTIAL BREXIT ON THE POWER INDUSTRIES Panellists to be confirmed
10:40	NETWORKING REFRESHMENT BREAK
	CYBER SECURITY
11:10	ENHANCING CYBER RESILIENCE AND WORKING WITH THE OIL AND GAS SECTORS: A US PERSPECTIVE Tom Baer, Deputy Director, National Cyber Security and Communications Integration Center (NCCIC), US Department of Homeland Security
11:40	ENHANCING CYBER RESILIENCE AND WORKING WITH THE OIL AND GAS SECTORS: A UK PERSPECTIVE Speaker to be confirmed
	SHALE GAS FOCUS
12:10	ENERGY SECURITY AND SHALE GAS Ken Cronin, Chief Executive, UKOOG
12:40	NETWORKING LUNCH
13:40	THE SECURITY OF SUPPLY AT THE CORE OF THE ENERGY UNION Samuele Furfari, Advisor to the Director General for Energy, European Commission
	NUCLEAR FOCUS
14:10	NUCLEAR GENERATION REPLACEMENT Alistair Smith, Acting Chair for the Power Industries Division, Institution of Mechanical Engineers
14:40	NETWORKING REFRESHMENT BREAK
15:10	NUCLEAR POWER PLANT DEPLOYMENT David Powell, Vice President - Europe, GE Hitachi
	INFRASTRUCTURE AND INVESTMENT
15:40	GOVERNMENT SUPPORT INCENTIVES AND THE INVESTMENT IN INFRASTRUCTURE Gareth Peel, Project Manager and Technical Lead, Cavendish Fluor Partnership
16:10	CHAIR'S CLOSING REMARKS
16:20	END OF SEMINAR

For the most up-to-date and detailed programme for the event, please visit [www.imeche.org/energy2016](http://www.imeche.org/energy2016)

- This programme is subject to change.
- The Institution is not responsible for the views or opinions expressed by individual speakers.



## HOW TO BOOK YOUR PLACE

### FEES AND CHARGES

Registration fees include entry to the sessions, refreshments, select conference presentations.

Fees and charges	Standard Rate	TOTAL
Standard Rate	£299.00 + VAT	£
Member/Academic rate	£199.00 + VAT	£

### THREE WAYS TO BOOK

- 1 Online:  
[www.imeche.org/energy2016](http://www.imeche.org/energy2016)
- 2 Email:  
[eventenquiries@imeche.org](mailto:eventenquiries@imeche.org)
- 3 Phone:  
+44 (0)20 7973 1251

Please read the information listed below as each booking is subject to the Institution's standard terms and conditions.

#### CONDITIONS OF BOOKING

Completed application forms should be returned to the address above, along with the correct payment. Attendance at the event will be confirmed on receipt of the full balance. All participants are advised to bring a copy of their confirmation with them on the day, to ensure the fastest possible entry.

#### SPECIAL REQUIREMENTS

Please inform us of any special requirements, ie dietary or access, on the relevant section of this form.

#### CANCELLATION

For a refund (minus £25+VAT admin charge), cancellations must be received at least 14 days prior to the event. Replacement delegates are welcome at any time. The Institution reserves the right to cancel any event. In this case, the full fee will be refunded unless a mutually convenient transfer can be arranged. In the event that the Institution postpones an event for any reason and the delegate is unable or unwilling to attend on the rescheduled date, they will receive a full refund of the fee paid.

The Institution is not responsible for any loss or damage as a result of a substitution, alteration or cancellation/postponement of an event. The Institution shall assume no liability whatsoever if this event is cancelled, rescheduled or postponed due to a fortuitous event, Act of God, unforeseen occurrence or any other event that renders performance of this conference impracticable, illegal or impossible. For the purposes of this clause, a fortuitous event shall include, but not be limited to: war, fire, labour strike, extreme weather or other emergency.

Please note that while speakers and topics were confirmed at the time of publishing, circumstances beyond the control of the organisers may necessitate substitutions, alterations or cancellations of the speakers and/or topics. The Institution reserves the right to alter or modify the advertised speakers and/or topics if necessary without any liability to you whatsoever. Any substitutions or alterations will be updated on the event's webpage as soon as possible.

#### LIABILITY

The organisers do not accept liability for any injuries or losses of any nature incurred by delegates and/or accompanying persons, nor for loss or damage to their luggage and/or personal belongings.

#### CONFERENCE VENUE

International Festival of Business  
Hall 1, Exhibition Centre, Kings Dock St,  
Liverpool Waterfront, Liverpool, L3 4FP

Please contact the Liverpool Convention Bureau team to discuss your accommodation requirements on Tel +44 (0) 151 600 2996 or email [conferences@visitliverpool.com](mailto:conferences@visitliverpool.com)

## SPONSORSHIP & EXHIBITION OPPORTUNITIES

### GET INVOLVED

Attending this event as either an exhibitor or sponsor will give you the opportunity to display your solutions, services and products to the right people at the right time.

### BENEFITS OF SPONSORING

- **Showcase** new products
- **Raise** awareness of your operation
- **Improve** perception of your brand
- **Influence** other organisations' spending plans

This is an excellent way to enhance your company profile and communicate effectively to your target audience.

For more information please call  
**+44(0)20 7973 1249**  
or email [sponsorship@imeche.org](mailto:sponsorship@imeche.org)

# PE

DOWNLOAD  
THE PE APP

Access  
the latest  
engineering  
news

[www.imeche.org/peapp](http://www.imeche.org/peapp)



Institution of  
**MECHANICAL  
ENGINEERS**

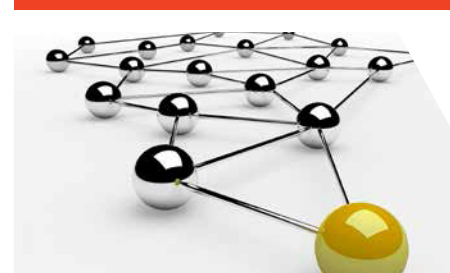
The Institution of Mechanical Engineers  
is a registered charity (no 206882)  
VAT No GB299930493.

1 Birdcage Walk  
Westminster  
London  
SW1H 9JJ  
T +44 (0)20 7222 7899  
[www.imeche.org](http://www.imeche.org)

# FORWARD THINKING

We are the market leader among professional engineering bodies. We've been supporting engineers since 1847 and have 111,000 members in over 140 countries, working in the world's most dynamic and important industries. Our comprehensive events programme brings you the latest research and best practice from industry and academia.

### OTHER EVENTS TO LOOK FOR



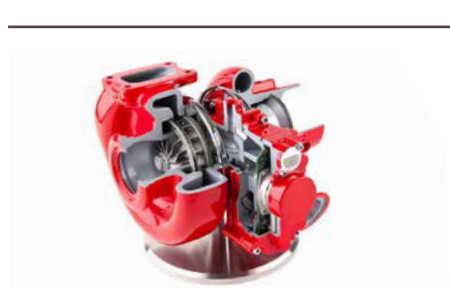
### ESSENTIAL MANAGEMENT SKILLS

20-22 April 2016,

**University of Warwick, Coventry**

Improve your ability to manage yourself, projects and teams as well as motivate you to take control of your own development.

[imeche.org/ems](http://imeche.org/ems)



### VIBRATIONS IN ROTATING MACHINERY

13-15 September 2016,

**University of Manchester, Manchester**

Redefining the challenges in rotordynamics, rub, whirl instability and more with international, industrial and academic experts, manufacturers and researchers

[www.imeche.org/VIRM](http://www.imeche.org/VIRM)

The Institution of Mechanical Engineers organise over 120 events a year, including free to attend lectures as well as conferences, seminars, annual luncheons and dinners. Please visit [www.imeche.org/events](http://www.imeche.org/events) for the complete list of events.

Follow us on Twitter



[twitter.com/imecheevents](https://twitter.com/imecheevents)