

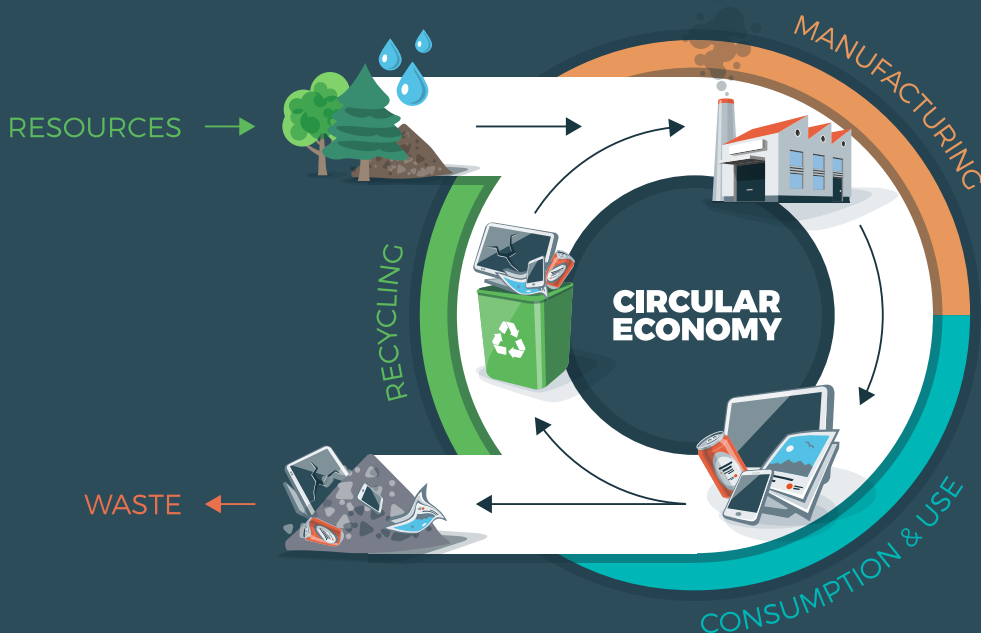
SUSTAINABLE DESIGN FOR A CIRCULAR ECONOMY

Institution of
**MECHANICAL
ENGINEERS**

25 March 2019
Online webinar

PRESENTED BY:

Marie Williams
CEO, Dream Networks



Book your place at:
www.imeche.org/circulareconomy

Online Webinar
Energy, Environment
& Sustainability Group

SUSTAINABLE DESIGN FOR A CIRCULAR ECONOMY

25 March 2019, Online Webinar

CURRENTLY THE UK IS FACED WITH FOOD AND MATERIAL WASTE CRISIS. ACCORDING TO RECYCLING FOR LONDON, 910,000 TONNES OF FOOD WASTE IS THROWN AWAY IN THE UK CAPITAL EACH YEAR AND YET THERE MORE PEOPLE THAN EVER ARE RELYING ON FOOD BANKS.

We can blame poor planning, a culture of excess, consumerism or we can decide as engineers to collaboratively design solutions that both reduce waste and utilise waste.

This webinar will look at the globally recognised themes of recycle, reuse and reduce through the lens of circular economy - an economy that recognises that the product life cycle continues after use and in doing so challenges and reimagines the intrinsic value of material waste.

Examples of how circular economy practitioners have collaborated with users and stakeholders in the built environment, food industries and public health services to co-design valuable solutions will also be presented. Resilient solutions that have longer life cycles, significantly reduce waste and have a clear economic benefit.

Finally, this webinar will touch on the role of policy in enabling us as engineers to effectively collaborate with users to design out waste, as well addressing the challenges the co-design movement faces.

PROGRAMME

12:00 Webinar Begins

12:40 Q&A

13:00 Webinar Finishes

FOR MORE INFORMATION:

VISIT: www.imeche.org/circulareconomy

CALL: +44 (0)20 7973 1251

EMAIL: eventenquiries@imeche.org



ABOUT THE SPEAKER:

MARIE WILLIAMS
CEO, Dream Networks

Marie Williams is a senior chartered engineer and CEO of Dream Networks, Social enterprise. Marie has a strong breadth of experience in the engineering design of sustainable innovations in the aerospace, nuclear, software and international development sectors. She is also heavily involved in promoting STEAM in education and child development, in the UK and internationally.

OTHER EVENTS TO LOOK FOR:

ASSET MANAGEMENT: DESIGNING FOR RELIABILITY

26 March 2019, London

This seminar will shift focus towards designing for reliability, and how it can be used to reduce maintenance and ensure reliability throughout the life cycle of an asset.

www.imeche.org/assetmanagement

ESSENTIAL MANAGEMENT SKILLS 2019

18-20 April 2019, Coventry

This three-day conference will equip today's engineers with the essential management skills required for success within line and project management roles.

www.imeche.org/ems