

# SURFACE ENGINEERING IN AUTOMOTIVE AND AEROSPACE INDUSTRIES

Institution of  
**MECHANICAL  
ENGINEERS**

9 June 2015  
University of Leeds  
[www.imeche.org/events/S6222](http://www.imeche.org/events/S6222)

Tribology Group  
**Seminar, poster sessions  
and PVD lab tour**



# SURFACE ENGINEERING IN AUTOMOTIVE AND AEROSPACE INDUSTRIES

9 June 2015, University of Leeds



## FIND OUT HOW VITAL RESEARCH INTO SURFACE ENGINEERING FOR THE AUTOMOTIVE AND AEROSPACE INDUSTRIES CAN PROVIDE ENVIRONMENTAL SUSTAINABILITY AND A REDUCTION IN LIFE-CYCLE COSTS.

Academic experts and leading OEMs from engine manufacturers in both the aerospace and automotive industries will come together to showcase early research and development in surface engineering, as well as those from the materials and coatings industry.

Cutting-edge coating and surface treatment technologies are increasing in importance for both automotive and aerospace industries. New coating compositions, formulations or pre-treatments for coatings that span the full range of compositions and deposition methods are essential to increase environmental sustainability of engines. This seminar will provide transferable lessons across a number of industries to increase awareness of surface engineering.

### BENEFITS OF ATTENDANCE:

- **Analyse** how surface engineering of turbomachinery components will meet future industry trends with **Dr Michael Burkinshaw**
- **Understand** how to reduce environmentally hazardous substances in surface treatments with **Prof Suman Shrestha**
- **Learn** about future trends in boundary lubrication of carbon-based coatings with **Dr Maria-Isabel De Barros Bouchet**
- **Look** at the prospects of driving costs down and increasing equipment capacity with **IHI Hauser Techno Coating**

### EVENT PARTNER:



### EXHIBITOR:



## SPONSORSHIP & EXHIBITION OPPORTUNITIES

### GET INVOLVED

Attending this event as either an exhibitor or sponsor will give you the opportunity to display your solutions, services and products to the right people at the right time.

This is an excellent way to enhance your company profile and communicate effectively to your target audience.

### BENEFITS OF SPONSORING

- **Showcase** new products
- **Raise** awareness of your operation
- **Improve** perception of your brand
- **Influence** other organisations' spending plans

For more information please call +44 (0)20 7973 1309 or email [sponsorship@imeche.org](mailto:sponsorship@imeche.org)

**TUESDAY 9 JUNE 2015**

- 09:00 REGISTRATION AND NETWORKING REFRESHMENTS**
- 09:30 CHAIR'S WELCOME**  
 Dr Ardian Morina, Deputy Director of Research and Innovation, Senior Lecturer, School of Mechanical Engineering, University of Leeds
- 09:40 SURFACE ENGINEERING OF TURBOMACHINERY COMPONENTS TO MEET FUTURE INDUSTRY TRENDS**  
 Dr Michael Burkinshaw, Senior Tribologist, Cummins Turbo Technologies
- Detailed overview of a turbocharger and its components
  - Discussing the drivers behind surface engineering of turbocharger components
  - Examining specific applications of surface treatments applied to turbocharger components
- 10:05 Q&A SESSION**
- 10:10 LUBRICANT FORMULATION FOR ADVANCED COATINGS IN HIGH-PERFORMANCE ENGINES**  
 Dr Andrew Greenall, Project Leader, Shell Motorsport Lubricant Development
- An overview of the use of advanced coatings in high-performance engines, and how we can formulate the lubricant to take advantage of their beneficial properties
  - A focus on DLC coatings and their chemical interactions with lubricants, and how viscosity plays an important role
  - Learnings from motorsports and how these are applied to commercial applications
- 10:35 Q&A SESSION**
- 10:40 FUTURE TRENDS IN BOUNDARY LUBRICATION OF CARBON-BASED COATINGS FOR THE AUTOMOTIVE INDUSTRY**  
 Dr Maria-Isabel De Barros Bouchet, Associate Professor, Laboratory of Tribology and System Dynamics, Ecole Centrale de Lyon
- Carbon-based coatings for the automotive industry
  - Performances of carbon-based coatings under boundary lubrication conditions
  - Hybridisation changes induced by friction in carbon-based coatings
- 11:05 Q&A SESSION**
- 11:10 NETWORKING REFRESHMENT BREAK AND POSTER SESSION**
- 11:40 PLASMA ELECTROLYTIC OXIDATION (PEO) – REACH-COMPLIANT ADVANCED SURFACE TECHNOLOGY**  
 Prof Suman Shrestha, Vice President – Applications Development and Quality Systems, Keronite International
- Analysing plasma electrolytic oxidation process for surface treatment of light metals (eg Al, Mg, Ti and their alloys including MMCs) and microstructure relationships
  - Reducing environmentally hazardous substances in surface treatments
  - Increasing protection to the base alloy in terms of corrosion, wear and improving other functional characteristics (thermo-optical, dielectric, thermal barrier, low friction coefficient)
- 12:05 Q&A SESSION**
- 12:10 HIGH-TEMPERATURE OXIDATION AND WEAR MECHANISMS FOR TiAlN BASED HARD COATINGS**  
 Vishal Khetan, Marie Curie Research Fellow, School of Mechanical Engineering, University of Leeds
- Potential of TiAlN as high-temperature protective coatings
  - Understanding of the oxidation and wear mechanisms (700 to 950°C) for TiAlN based coatings
  - Development of R&D methodology for high-temperature tribological evaluation of TiAlN based hard coatings
- 12:35 Q&A SESSION**
- 12:40 NETWORKING LUNCH, POSTER SESSION AND OPTIONAL PVD LAB TOUR**  
 (Please highlight if you would like to attend this tour on the booking form)

- 14:00 HIGH-VOLUME COATING TECHNOLOGIES FOR APPLICATIONS IN THE AUTOMOTIVE INDUSTRIES**  
**Dave Doerwald, Manager Process Engineering, Ruud Jacobs, Process Manager Tribological Coatings, Geert-Jan Franssen, Product Manager Tribological Coatings, Ivan Kolev, Senior Process Engineer, IHI Hauzer Techno Coating BV**
- Examining technological developments in surface engineering over the last five years
  - Analysing technology development drivers such as reduction of CO<sub>2</sub> emissions
  - Cost as a technology driver: increasing equipment capacity
- 14:25 Q&A SESSION**
- 14:30 APPLICATIONS FOR COLD SPRAY FORMING AND COATING TECHNOLOGIES IN THE AEROSPACE AND AUTOMOTIVE INDUSTRIES**  
**Heidi Lovelock, Manager - Surface Engineering, TWI Ltd**
- Introduction to the cold spray process
  - Repair of Mg and Al alloy components
  - Deposition of Ti and Ni based alloys
  - Facilitating the joining of aluminium alloys
- 14:55 Q&A SESSION**
- 15:00 NETWORKING REFRESHMENT BREAK AND POSTER SESSION**
- 15:30 TRIBOLOGICAL CHALLENGES POSED BY THE REACH LEGISLATION TO FUEL CONTROLS SYSTEM DESIGN**  
**Terry Hirst, Materials Technology Manager Commodity Strategy, Controls and Data Services, Part of the Rolls-Royce Group**
- 15:55 Q&A SESSION**
- 16:00 ENERGY-EFFICIENCY IN AUTOMOTIVE AND AEROSPACE APPLICATIONS BY SURFACE TECHNOLOGY**  
**Dr. Nazlim Bagcivan, Director R&D Surface Technology, Schaeffler**
- Overview about Schaeffler coatings for various applications
  - Energy-efficient coatings in automotive drivetrain
  - Application of thin film coatings in aerospace applications
- 16:25 Q&A SESSION**
- 16:30 LATEST ADVANCES IN SURFACE TECHNOLOGY FOR AUTOMOTIVE AND AEROSPACE INDUSTRIES**  
**Dr Liuquan Yang, R&D Engineer/Marie Curie Fellow, Oerlikon Sorevi**  
**Toby Middlemiss, Segment Manager Aerospace, Oerlikon Balzers**
- Analysing current market trends and industry challenges
  - Developing coatings for automotive and aerospace industries
  - Evaluating coating applications for automotive, aerospace and precision components
- 16:55 Q&A SESSION**
- 17:00 THE INFLUENCE OF COATING PARAMETERS ON TRIBOLOGICAL PERFORMANCE AND TRIBOFILM FORMATION**  
**Dr Hongyuan Zhao, Dr Ardian Morina, School of Mechanical Engineering, University of Leeds**
- DLC Coatings can have different mechanical properties when coating parameters are changed
  - The tribological performance is also influenced
  - Effects on tribochemistry of carbon films
- 17:25 Q&A SESSION**
- 17:30 CHAIR'S CLOSING COMMENTS**
- 17:40 END OF SEMINAR**

**Find out more about our speakers at [www.imeche.org/events/S6222](http://www.imeche.org/events/S6222)**

- This programme is subject to change.
- The Institution is not responsible for the views or opinions expressed by individual speakers.

**Organising committee:**

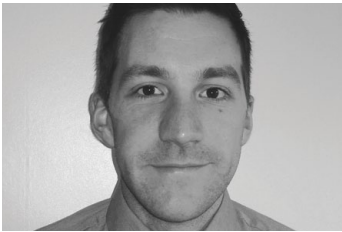
- Dr Ardian Morina, Deputy Director of Research and Innovation, Senior Lecturer, School of Mechanical Engineering, University of Leeds
- Dr Michael Burkinshaw, Senior Tribologist, Cummins Turbo Technologies

## **SPEAKERS AND CONTRIBUTORS**



**DR ARDIAN MORINA**  
**DEPUTY DIRECTOR OF RESEARCH AND INNOVATION & SENIOR LECTURER, SCHOOL OF MECHANICAL ENGINEERING, UNIVERSITY OF LEEDS**

Dr Ardian Morina's research work is focused on the interdisciplinary research fields of tribology and surface engineering. The main objective of his research is the development of mechanistic and numerical models that describe friction and wear performance in boundary and mixed lubrication regime. This research is of relevance to automotive, manufacturing and energy industries and is supported by EPSRC, EU and industry project grants. His key research areas include engine tribology and tribochemistry, transmission systems tribology and tribochemistry, novel experimental and analytical techniques for tribology/tribochemistry research, friction and wear of novel materials and interface processes.



**DR MICHAEL BURKINSHAW**  
**SENIOR TRIBOLOGIST, CUMMINS TURBO TECHNOLOGIES**

Dr Michael Burkinshaw is Senior Tribologist at Cummins Turbo Technologies, where he is responsible for research and development conducted in the topic areas of tribology and surface engineering. He and his team are currently focusing their work on developing innovative solutions to meet future engineering challenges within the turbomachinery industry, specifically materials and surface treatments to improve product durability, optimise frictional response and minimise product cost.



**DR MARIA-ISABEL DE BARROS BOUCHET**  
**ASSOCIATE PROFESSOR, DEPARTMENT OF SCIENCE AND TECHNOLOGY OF MATERIALS AND SURFACES, ECOLE CENTRALE DE LYON**

Dr Maria-Isabel De Barros Bouchet's research activity in the Laboratory of Tribology and System Dynamics mainly concerns the understanding of tribochemical reactions of lubrication additives using simulation by gas phase lubrication, especially the lubrication of carbon-based coatings with green additives and super-lubricity mechanisms. She has over 50 publications with numerous citations on these topics and has collaborated to the redaction of three books. Her work is at the origin of various patents on those topics and the subject of numerous international invited talks.



**PROF SUMAN SHRESTHA**  
**VICE PRESIDENT – APPLICATIONS ENGINEERING, KERONITE INTERNATIONAL**

Prof Suman Shrestha spent five years at TWI helping aerospace and oil & gas industries working on a wide variety of surface technologies. In 2005 he joined Keronite to focus on research, application development and commercial exploitation of the PEO technology on light alloys (Al, Mg, Ti). Currently, he has been working with major aerospace companies including Airbus, Boeing and numerous organisations in advancing the PEO technology. He sits on the Technology Advisory Board for Keronite and is on the Editorial Board for the Journal of Surface Engineering. He is a Chartered Engineer, Chartered Scientist, Fellow (IOM3) and Fellow (IMEchE).



**VISHAL KHETAN**  
**MARIE CURIE RESEARCH FELLOW, SCHOOL OF MECHANICAL ENGINEERING, UNIVERSITY OF LEEDS**

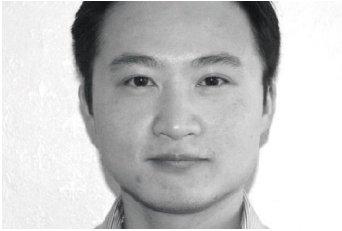
Vishal Khetan is a Marie Curie Research Fellow and also works in close collaboration with Mercedes Benz Powertrains AMG. His work develops new laboratory methodologies for accurate simulation of internal combustion engine tribochemistry. Previously, he worked for CRP Gabriel Lippmann, Luxembourg with an AFR fellowship as a trainee researcher, undertaking a surface engineering project named SpiTriCoat and in parallel pursued a PhD degree with ULB, Brussels. His research produced two international peer-reviewed research publications and participation in six international/industrial conferences.

## **SPEAKERS AND CONTRIBUTORS**



**HEIDI LOVELOCK**  
**MANAGER – SURFACE ENGINEERING, TWI**

Heidi Lovelock manages the Surface Engineering Section at TWI, an independent research and technology organisation in Cambridge. She has over 25 years of industrial and applied research experience in the area of thermal spray coatings, weld hardfacing and high-temperature cobalt-based wear resistant alloys. She holds a Master's in Materials Science and is a Fellow of the Institute of Materials, Minerals and Mining.



**DR LIUQUAN YANG**  
**MARIE CURIE RESEARCH FELLOW, OERLIKON SOREVI (FRANCE)**

Dr Liuquan Yang is currently working in Oerlikon Sorevi (France) as a Marie Curie Fellow. He is interested in coating development for optimised solutions related to DLC/thin film under lubricated conditions. Prior to Oerlikon, he held Process Systems Engineering at Cranfield University and Tribology at the University of Leeds, with a focus on the DLC/lubricant additives interactions.



**TOBY MIDDLESMISS**  
**PRODUCT MANAGER, OERLIKON BALZERS**

Toby Middlemiss has been working for Oerlikon Balzers for nine years in the components segment. After completing degrees in Mechanical Engineering and Motorsport Engineering at Cranfield University, he worked for Balzers supporting the components markets with surface solutions, in particular looking at PVD thin film carbon coatings such as DLCs. More recently he has had a focus on developing coatings for the aerospace industry such as erosion-prevention coatings and chrome replacement solutions.



**DR ANDREW GREENALL**  
**PROJECT LEADER, SHELL MOTORSPORT LUBRICANT DEVELOPMENT**

Dr Andrew Greenall is responsible for leading the development of high-performance lubricants in close collaboration with a number of motorsport teams in Formula One, MotoGP, World Superbikes, World Rally Championship, DTM and GT series. He joined Shell in 2011 in the Lubrication Science Team, which focused on understanding fundamental lubrication behaviour. His passion for motorsport led him to the development of race lubricants across Shell's wide range of motorsport disciplines. This, in turn, led to the exciting challenge of developing and delivering optimised race lubricants to Shell's technical partners to maximise the power, performance and durability of the respective engines.



**DR. NAZLIM BAGCIVAN**  
**DIRECTOR R&D SURFACE TECHNOLOGY, SCHAEFFLER**

Dr. Nazlim Bagcivan is responsible for Schaeffler-wide R&D activities in the Competence Centre Surface Technology at Schaeffler Technologies. He studied mechanical engineering and specialised in aeronautical and space engineering. After his studies at RWTH Aachen University he received his doctorate from the Surface Engineering Institute at RWTH Aachen University. During the past 10 years he has been involved in R&D of surface engineering in various application fields in the automotive and aerospace industries and has authored/co-authored more than 140 publications in these fields. His current activities concentrate on the customer oriented development of industrial surface technology solutions in mass production.

# BOOKING FORM

EVENT CODE: S6222AB

## SURFACE ENGINEERING IN AUTOMOTIVE AND AEROSPACE INDUSTRIES

9 June 2015  
University of Leeds, Leeds LS2 9JT

### REGISTRATION Please complete in capitals.

Family Name	Title (Mr, Mrs, Miss)
First Name	Job Title
Membership No	Institution
Name of Organisation (for name badge)	
Address for correspondence	
Town/City	
Postcode	
Contact Telephone	
Email	
Do you have any special requirements?	

How did you hear about this event?  Direct mail  Website  Colleague  Other

We would like to keep you informed of relevant services that may be of benefit to you. Please tick the boxes below to let us know what you're interested in:

- Events and training opportunities  
 News and updates from the Institution  
 Services and offers from our preferred partners

### FEES AND CHARGES Please complete the appropriate box.

Registration fees include entry to the sessions, refreshments, lunch and a copy of the event proceedings.

	STANDARD RATE	VAT	TOTAL
Member, Institution of Mechanical Engineers	£275.00	£55.00	£
Member, supporting organisation	£275.00	£55.00	£
Non-member	£385.00	£77.00	£
Student/retired	£99.00	£19.80	£

- Optional PVD Lab Tour (free to attend)

### PAYMENT DETAILS

Payment must accompany this registration form. Registration will be confirmed only on receipt of full payment.

#### PLEASE INDICATE METHOD OF PAYMENT:

- Cheque** Cheques should be made payable to IMechE and crossed. Please note international delegates may pay only by credit card, BACS or banker's draft. A copy of the draft must accompany this form. It is the delegate's responsibility to pay any bank charges.
- Credit Card**  
Card type:  Visa  MasterCard (please note we cannot accept American Express, Diners Club or Maestro)  
Card No \_\_\_\_\_ Valid From \_\_\_\_\_ / \_\_\_\_\_ Expiry Date \_\_\_\_\_ / \_\_\_\_\_  
Name of Cardholder \_\_\_\_\_  
Billing Address of Cardholder (if different from above) \_\_\_\_\_  
Postcode \_\_\_\_\_  
Amount to be Deducted \_\_\_\_\_ Signature \_\_\_\_\_
- BACS** BACS bank transfers can be made to:  
**IMechE Current Account, NatWest Charing Cross Branch.**  
Sort Code: **60-40-05** Acc No: **00817767**  
Swift Code: **NWBKGB2L** IBAN Code: **GB96NWBK60400500817767**  
A copy of the draft must accompany this form.
- Invoice (UK residents only)** Delegates wishing to be invoiced must provide an order number. If your company does not use order numbers please include a formal request for invoicing on your company's letterhead. A charge of £10 +VAT will be made to cover additional administration costs. Invoices are payable on receipt and no alterations to these terms will be accepted.
- Order No \_\_\_\_\_  
Contact Name \_\_\_\_\_  
Name and Address for Invoicing \_\_\_\_\_  
Postcode \_\_\_\_\_  
Tel \_\_\_\_\_ Fax \_\_\_\_\_

## FIVE WAYS TO BOOK

- 1 Online:  
[www.imeche.org/events/S6222](http://www.imeche.org/events/S6222)
- 2 Email:  
[eventenquiries@imeche.org](mailto:eventenquiries@imeche.org)
- 3 Phone:  
**+44 (0)20 7973 1258**
- 4 Post completed booking form to:  
**Event Registrations  
Institution of Mechanical  
Engineers  
1 Birdcage Walk  
London SW1H 9JJ**
- 5 Fax:  
**+44 (0)20 7304 6845**

Please read the information listed below as each booking is subject to the Institution's standard terms and conditions.

#### CONDITIONS OF BOOKING

Completed application forms should be returned to the address above, along with the correct payment. Attendance at the event will be confirmed on receipt of the full balance. All participants are advised to bring a copy of their confirmation with them on the day, to ensure the fastest possible entry.

#### SPECIAL REQUIREMENTS

Please inform us of any special requirements, ie dietary or access, on the relevant section of this form.

#### CANCELLATION

For a refund (minus £25+VAT admin charge), cancellations must be received at least 14 days prior to the event. Replacement delegates are welcome at any time. The Institution reserves the right to cancel any event. In this case, the full fee will be refunded unless a mutually convenient transfer can be arranged. In the event that the Institution postpones an event for any reason and the delegate is unable or unwilling to attend on the rescheduled date, they will receive a full refund of the fee paid.

The Institution is not responsible for any loss or damage as a result of a substitution, alteration or cancellation/postponement of an event. The Institution shall assume no liability whatsoever if this event is cancelled, rescheduled or postponed due to a fortuitous event, Act of God, unforeseen occurrence or any other event that renders performance of this conference impracticable, illegal or impossible. For the purposes of this clause, a fortuitous event shall include, but not be limited to: war, fire, labour strike, extreme weather or other emergency.

Please note that while speakers and topics were confirmed at the time of publishing, circumstances beyond the control of the organisers may necessitate substitutions, alterations or cancellations of the speakers and/or topics. The Institution reserves the right to alter or modify the advertised speakers and/or topics if necessary without any liability to you whatsoever. Any substitutions or alterations will be updated on the event's webpage as soon as possible.

#### LIABILITY

The organisers do not accept liability for any injuries or losses of any nature incurred by delegates and/or accompanying persons, nor for loss or damage to their luggage and/or personal belongings.

#### VENUE

University of Leeds, Leeds LS2 9JT

#### ENQUIRIES

For event enquiries please call **+44 (0)20 7973 1258** or email [eventenquiries@imeche.org](mailto:eventenquiries@imeche.org)

The Institution of Mechanical Engineers is a registered charity (no 206882)  
VAT No GB299930493.

# FORWARD THINKING

We are the market leader among professional engineering bodies. We've been supporting engineers since 1847 and have 111,000 members in over 140 countries, working in the world's most dynamic and important industries. Our comprehensive events programme brings you the latest research and best practice from industry and academia.

## OTHER EVENTS TO LOOK FOR:



23 April 2015  
London

### MANAGING YOUR WAY TO F1 SUCCESS

Andy Cowell, Managing Director, Mercedes AMG High Performance Powertrains, will explore how to manage a fast-paced, technically advanced organisation and stay in control.

[www.imeche.org/events/L6217](http://www.imeche.org/events/L6217)



16 June 2015  
Coventry

### BEYOND CONVENTIONAL POWERTRAIN: SVT 2015

Sustainable Vehicle Technologies (SVT) 2015 will examine the latest advances in propulsion and vehicle efficiency technologies with a view to understanding the latest developments of systems for carbon dioxide reduction over the entire vehicle lifecycle.

[www.imeche.org/events/C6188](http://www.imeche.org/events/C6188)

### CELEBRATING OUR PROFESSION.

THE INSTITUTION OF  
MECHANICAL  
ENGINEERS



19 November 2015  
London

### THE INSTITUTION OF MECHANICAL ENGINEERS' ANNUAL DINNER

The evening will begin with a drinks reception, followed by a four-course gala dinner where you will be able to network with leading figures from the profession and the business world, while enjoying after-dinner entertainment from Jack Dee.

[www.imeche.org/events/AD6237](http://www.imeche.org/events/AD6237)

#### INFORMATION AND BOOKINGS

CALL: +44 (0)20 7973 1258

EMAIL: [eventenquiries@imeche.org](mailto:eventenquiries@imeche.org)

VISIT: [www.imeche.org/events](http://www.imeche.org/events)

## JOURNALS

The Journals of the Institution of Mechanical Engineers are published by SAGE. The leading title the Proceedings of the IMechE now comprises sixteen Journals covering a broad range of engineering disciplines. Our journals can be accessed via

[uk.sagepub.com/imeche\\_home.sp](http://uk.sagepub.com/imeche_home.sp) as well as through Scitopia, and other leading scholarly search services.

To find out more contact **Subscriptions** on +44 (0)1952 214050 or email [subscriptions@imeche.org](mailto:subscriptions@imeche.org)

## MEMBERSHIP

Whether you're a student, apprentice, graduate, qualified engineer or just have an interest in engineering, Institution membership offers the highest professional prestige. Professional registration is a valuable investment for any engineer who is serious about their career.

Find out which level you're best suited for at [www.imeche.org/membership](http://www.imeche.org/membership) or email us on [membership@imeche.org](mailto:membership@imeche.org)

## GET INVOLVED

Whether you're new to the profession or well established, volunteering is a great way to gain new skills, knowledge and experience. As an Ambassador you have the chance to represent your profession and give something back to the engineering community as well as inspiring the next generation.

See [www.imeche.org/volunteering](http://www.imeche.org/volunteering) for more information or go to <http://nearyou.imeche.org>

Institution of  
**MECHANICAL  
ENGINEERS**

1 Birdcage Walk  
Westminster  
London  
SW1H 9JJ

T +44 (0)20 7222 7899

[www.imeche.org](http://www.imeche.org)

Keep up  
your CPD

### Continuing Professional Development (CPD)

Our online Career Developer tool can help you:

- **Plan** Create an Action Plan and identify targets
- **Record** Download a record of your learning activities
- **Review** Reflect on your professional development

Register for Career Developer and get more from your career [www.imeche.org/careerdeveloper](http://www.imeche.org/careerdeveloper)

For tailored advice contact [cpd@imeche.org](mailto:cpd@imeche.org)